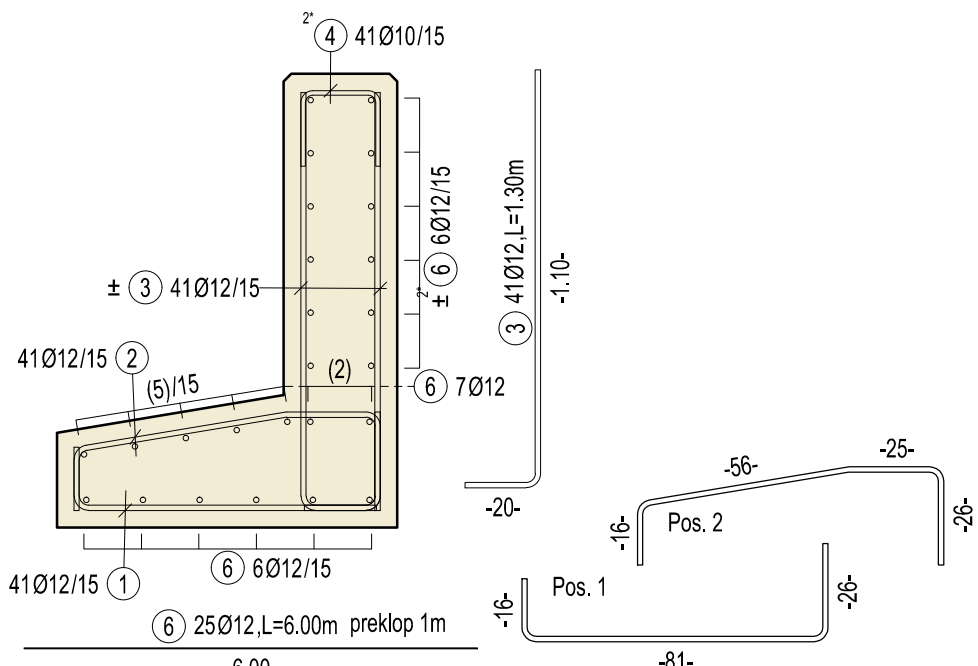


PODPORNI ZID h = 1.20 m

M 1:20

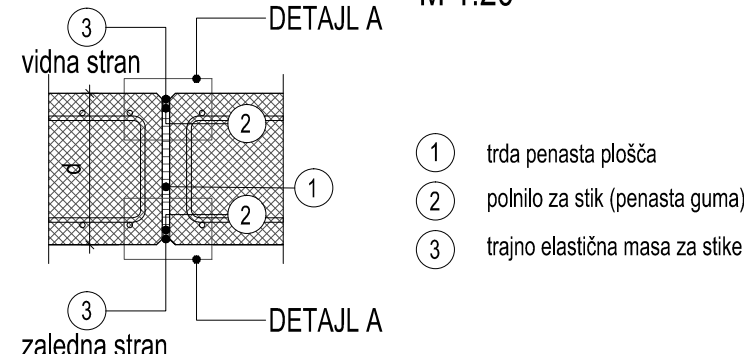
l = 165 m - 2 kos
l = 86 m - 2 kos



B A R S C H E D U L E				Steelgrade: B500B	Component: PZ
Pos.	No.	d	Length	D10	D12
1	41	12	1.23		50.43
2	41	12	1.23		50.43
3	41	12	1.30		53.30
4	82	10	0.61	50.02	
6	25	12	6.00		150.00
Total lengths				50.02	304.16
kg / m				D10 0.617	D12 0.888
kg / d				30.862	270.094
Total weight (kg)				300.956	
Number 100				30095.600	

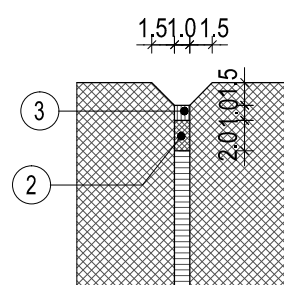
DETAJL DILATACIJSKE REGE (DR)

M 1:20



DETAJL A

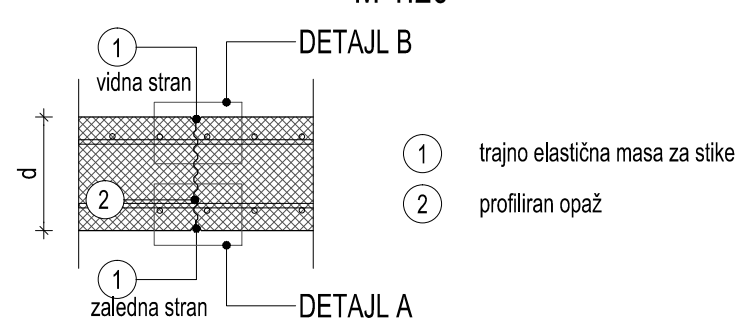
M 1:5



OPOMBE:
- dilatacijske enote maksimalne dolžine 12m
- razdalje med stičnimi regami maksimalno 6m

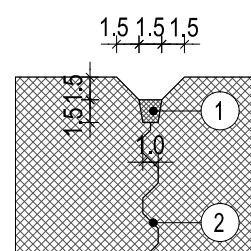
DETAJL STIČNE REGE (SR)

M 1:20



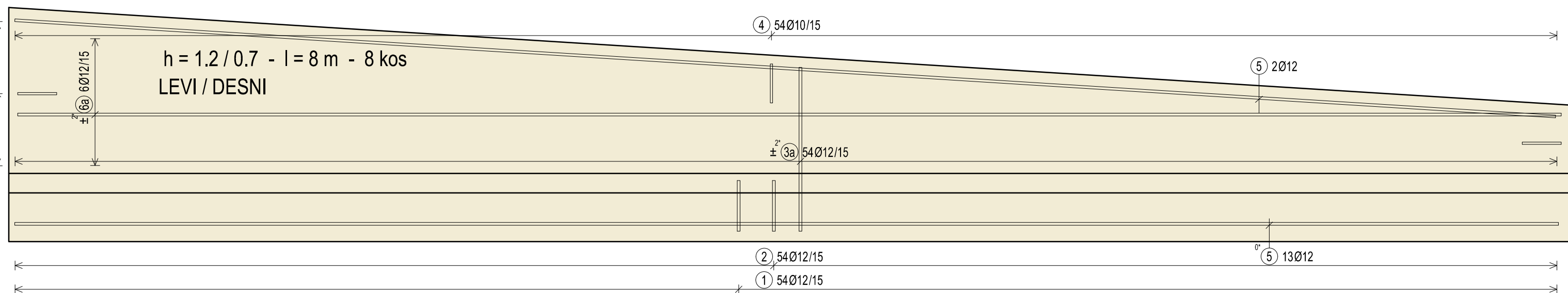
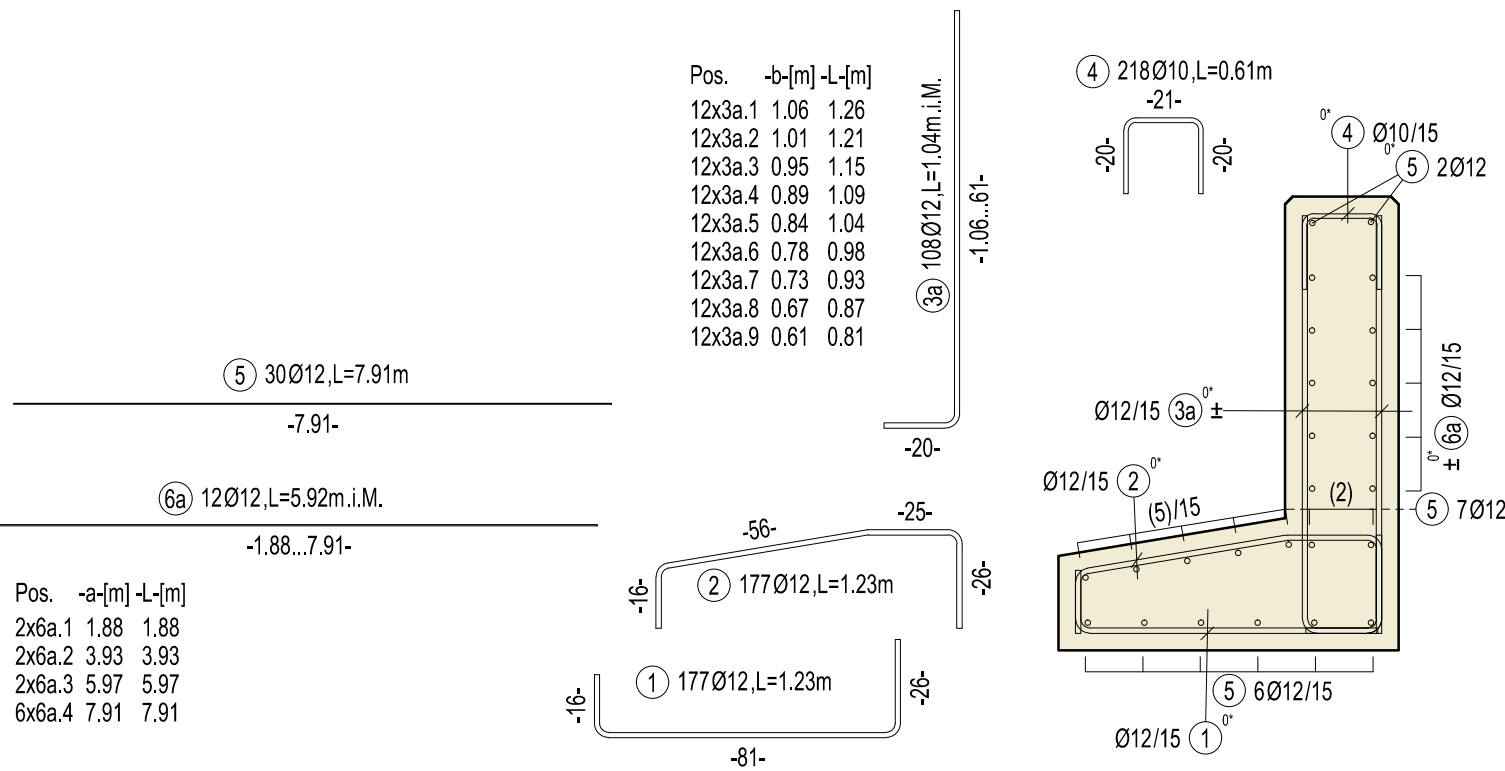
DETAJL B

M 1:5

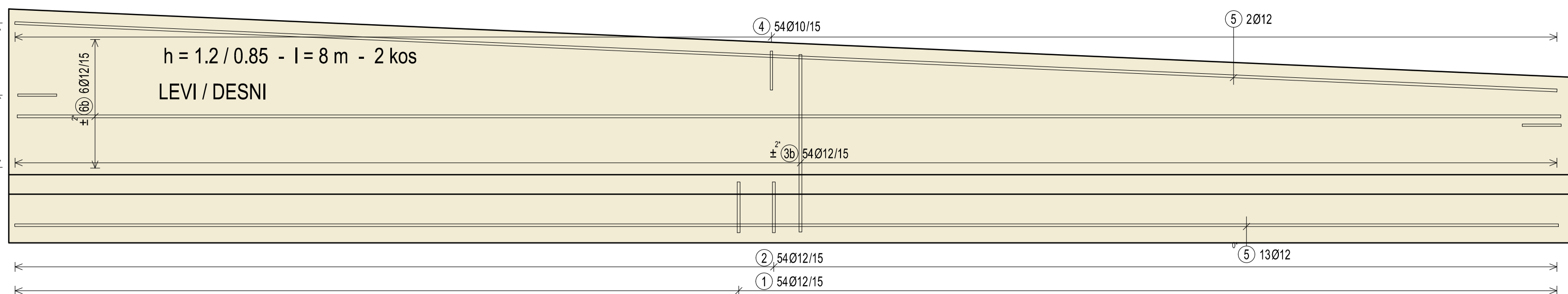
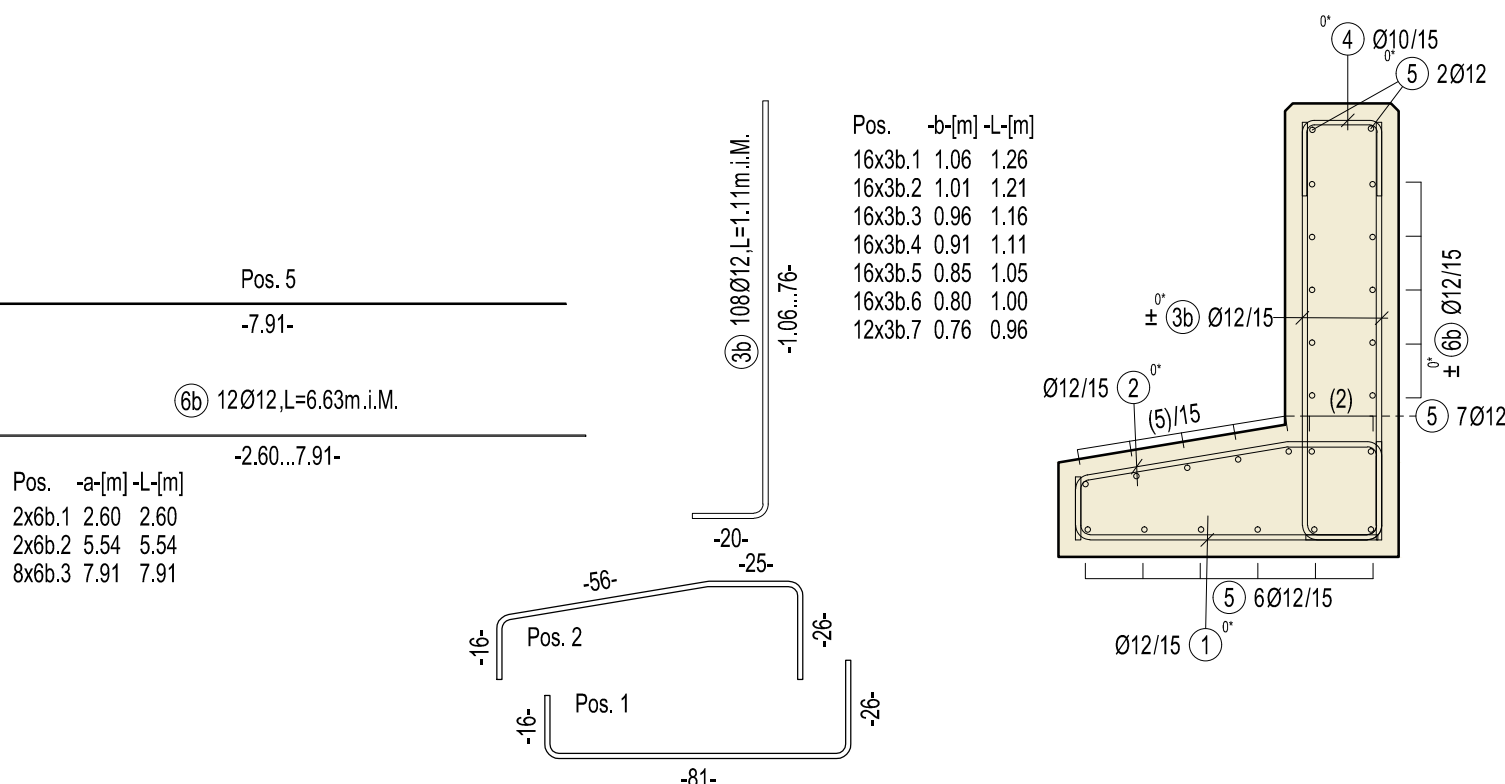


PODPORNI ZID OB NIVOJSKIH PREHODIH - DOSTOPNE RAMPE

M 1:20



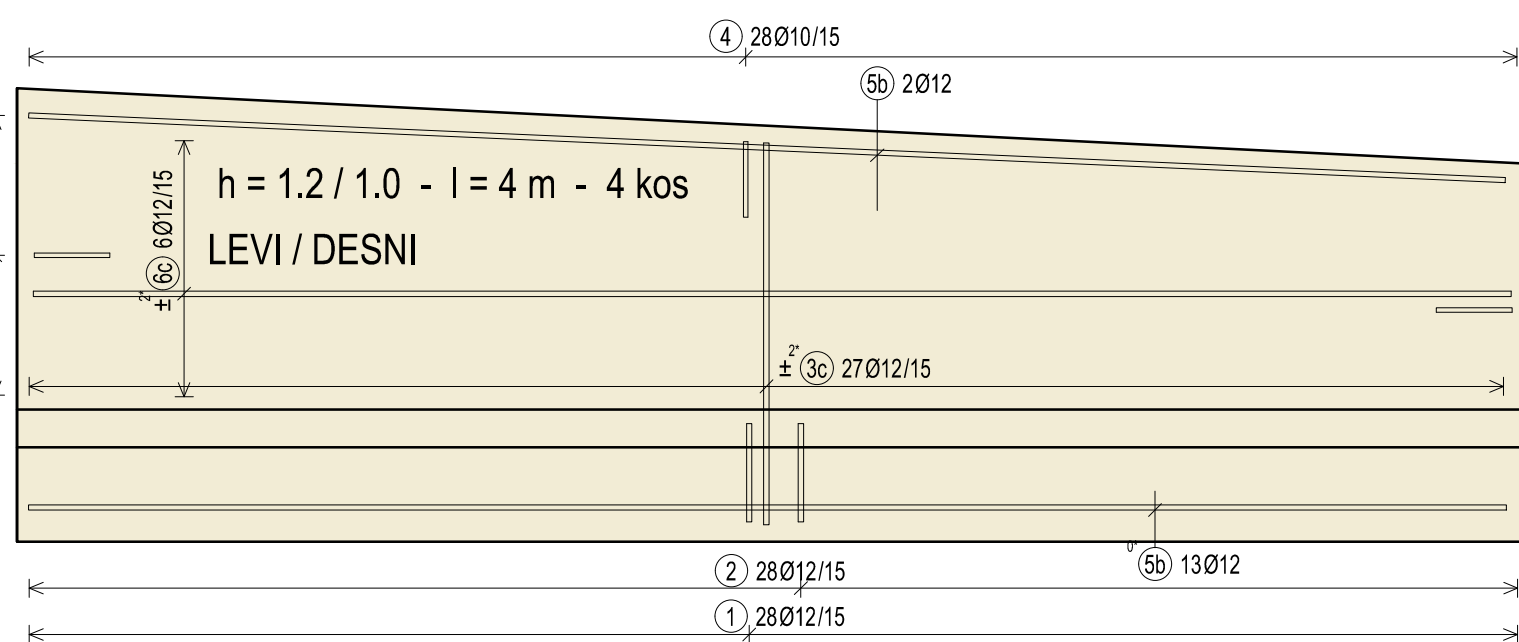
B A R S C H E D U L E				Steelgrade: B500B	Component: R1
Pos.	No.	d	Length	D10	D12
1	54	12	1.23		66.42
2	54	12	1.23		66.42
3a	108	12	1.04*		112.32
4	54	10	0.61	32.94	
5	15	12	7.91		118.65
6a	12	12	5.92*		71.04
7	10	10	0.58	5.80	
Total lengths				38.74	434.85
kg / m				D10 0.617	D12 0.888
kg / d				23.903	386.147
Total weight (kg)				410.050	
Number 8				3280.400	



B A R S C H E D U L E				Steelgrade: B500B	Component: R2
Pos.	No.	d	Length	D10	D12
1	54	12	1.23		66.42
2	54	12	1.23		66.42
3b	108	12	1.11*		119.88
4	54	10	0.61	32.94	
5	15	12	7.91		118.65
6b	12	12	6.63*		79.56
7	11	10	0.58	6.38	
Total lengths				39.32	450.93
kg / m				D10 0.617	D12 0.888
kg / d				24.260	400.426
Total weight (kg)				424.686	
Number 2				849.372	

PODPORNI ZID
ARMATURNI NAČRT

M 1:20



B A R S C H E D U L E				Steelgrade: B500B	Component: R3
Pos.	No.	d	Length	D10	D12
1	28	12	1.23		34.44
2	28	12	1.23		34.44
3c	54	12	1.19*		64.26
4	28	10	0.61	17.08	
5b	15	12	3.91		58.65
6c	12	12	3.57*		42.84
7	12	10	0.58	6.96	
Total lengths				24.04	234.63
kg / m				D10 0.617	D12 0.888
kg / d				14.833	208.351
Total weight (kg)				223.184	
Number 4				892.736	

PROJEKTANT		INVESTITOR	
PROJEKTOVALCI:		NAZIV PROJEKTA:	
Dilbor STANIČ, univ. dipl. inž. grad.		Vl. skupina železniških tirov in 61 70, 80 ter podal[anje tira 44 v Luki Koper]	
ODGOVORNI AVTOR PROJEKTA:		OPRE RESE:	
Dilbor STANIČ, univ. dipl. inž. grad.		Podporni zid Armaturni načrt	
PROJEKTANT SODELEVALCI:		VERILO:	
Viljem KOVAČ		1:20, 1:5	
PROJEKTANT SODELEVALCI:		ST. PROJEKTA:	
PZI		202-16E	
ST. PROJEKTA:		VRETA NAČRTA:	
april 2018		3/1 Načrti gradbenih konstrukcij in drugi gradbeni načrti	
ST. PROJEKTA:		VRETA PROJEKTA:	
april 2018		CC-SI 2122	
ST. PROJEKTA:		VRETA PROJEKTA:	
april 2018		CC-SI 2122	
ST. PROJEKTA:		VRETA PROJEKTA:	
april 2018		CC-SI 2122	